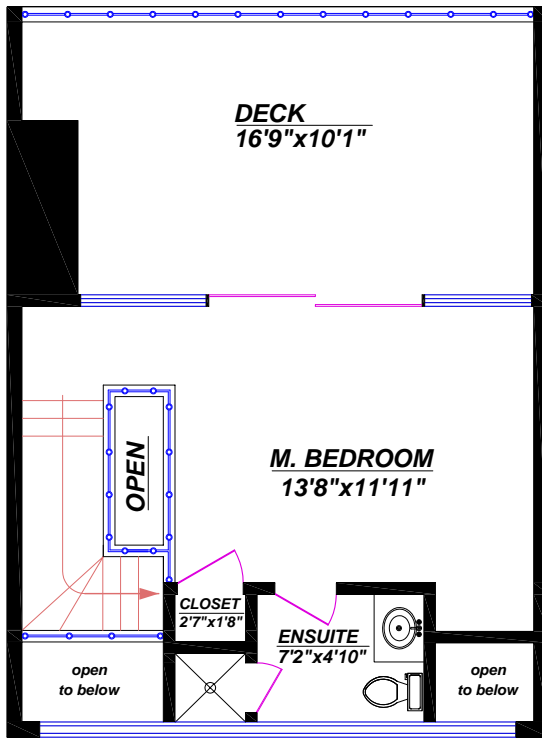


Prudential Sussex Realty - Richard Tak

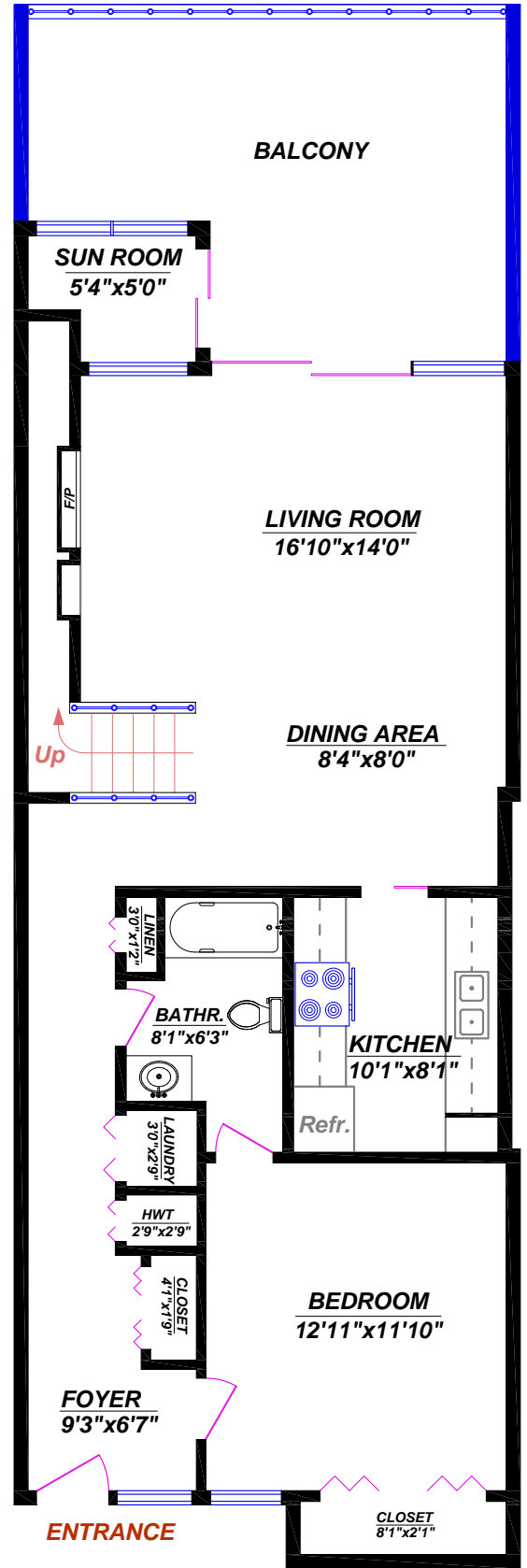
2397 Marine Drive,
 West Vancouver, B.C. V7V 1K9
 tel.: (604) 925-2911
 web: www.takrealtor.com

#45-2242 Folkestone Way, West Vancouver

Main Floor*: 892 sq.ft.
 Upper Level*: 278 sq.ft.
 TOTAL*: 1,170 sq.ft.



UPPER LEVEL



MAIN FLOOR

*) These measurements are not taken from the Strata Plan.
 *) The square footage is calculated based on the measurements to the exterior of the walls and to the middle of the common walls.