

Prudential Sussex Realty - Richard Tak

2397 Marine Drive
West Vancouver, BC V7V 1K9
(604) 925-2911
www.takrealtor.com

502 TEMPE CRESCENT, NORTH VANCOUVER

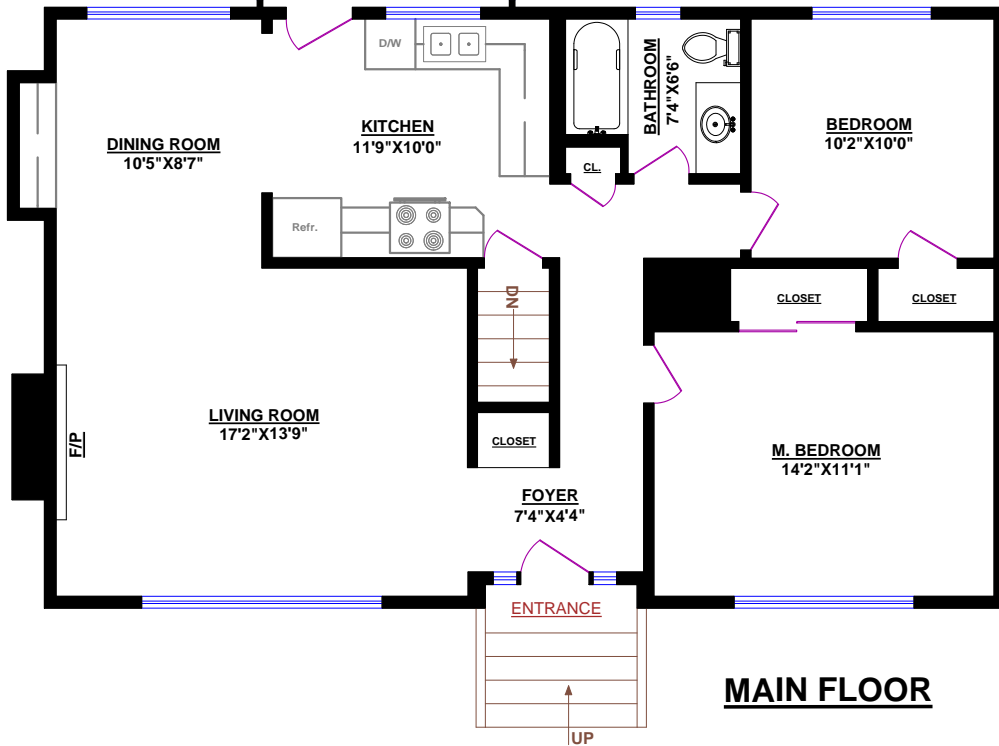
TOTALS
Main Floor : 1,014 sq.ft.
Lower Level: 722 sq.ft.
GRAND TOTAL: 1,736 sq.ft.

OTHER AREAS:
Garage: 288 sq.ft.
Sun Room: 75 sq.ft.
Patio: 367 sq.ft.

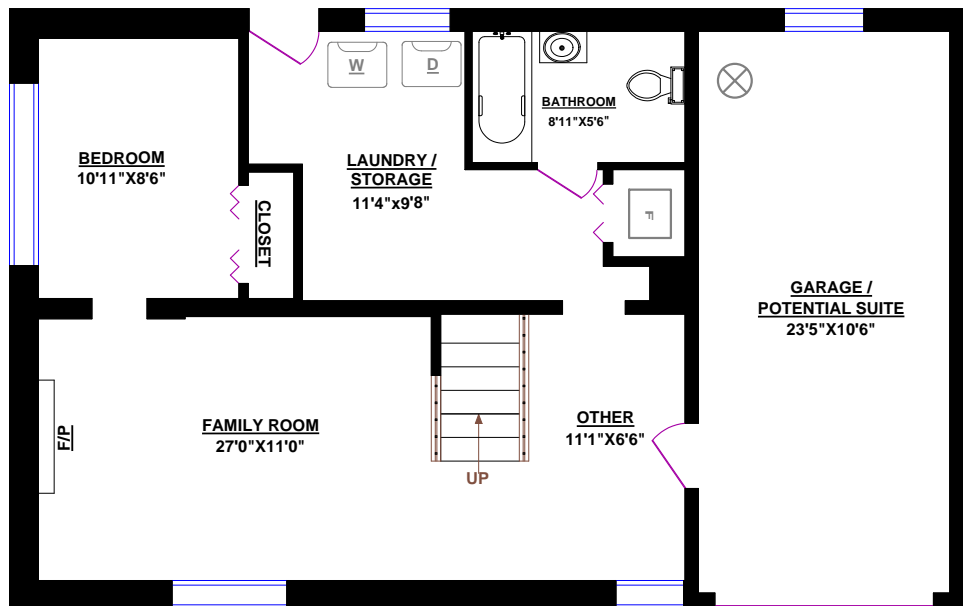


PATIO
22'10"X16'1"

SUN ROOM
10'4"X6'7"



MAIN FLOOR



LOWER LEVEL

